



AROUND THE GRAVES

RESEARCH

RESTORE

REMEMBER

ISSN 1835-5641
ISSN 1835-565X

NEWSLETTER OF THE FRIENDS OF CHELTENHAM AND REGIONAL CEMETERIES INC.

Melbourne Benevolent Asylum

This year marks the centenary of the Kingston Centre. Originally known as the Melbourne Benevolent Asylum, on 27 March 1911, the first patients were relocated from North Melbourne to the new buildings situated on corner of Warrigal Road and Kingston Road.

Research by the Friends shows that as many as 1,617 persons buried at the Cheltenham cemeteries were from the former Benevolent Asylum, while a further 280 were inmates of the Heatherton Sanatorium.

The relocation of the Asylum to Cheltenham had a profound effect on the Cheltenham Pioneer Cemetery. Being the nearest burial ground, it was only a matter of time before the first inmates were interred there. The first burial was believed to be that of **John Charles Noel** (CofE "C" 50) and **John Davis** (CofE "F" 55) who were both laid to rest on 6 April 1911. Just over 100 souls from the Asylum were interred in the first year alone. The effect on the Pioneer Cemetery was two-fold. Firstly, the sudden increase of public burials meant the Trust barely covered the costs of interring their remains. Secondly, the Cemetery began to take on the appearance that it retains today where many of the sections are sparingly covered with monuments due to the fact that very few of the former patients subsequently had a monument constructed over their grave.

The increased demand was not without consternation. The local Moorabbin Shire Council was sufficiently concerned about the health of the living to protest to the government authorities in July 1913 when a deputation waited on the Board of Health. *The Argus* newspaper reported that;

"Councillor David White (CofE "D" 116A) (president of the shire) said that when they...

[protested] against the sanatorium being built in the shire, they had been promised that, though it would be built there, the danger of infection would be minimised, and none of the consumptives would be buried in the cemetery... Consumptives were being buried, despite that promise, and they asked the board to have this stopped and consumptives taken to some cemetery farther from the centre of population. They had very limited accommodation for their own needs, and it was being rapidly filled."

Councillor **Robert Mills** (Meth "30" 24), who was also a Cemetery Trustee (1899-1923), pointed out that four or five burials a week from the Benevolent Asylum and five from the Sanatorium were being made at the Cemetery. Mills suggested that Springvale Necropolis was a more suited location being away from inhabitants. (*Source: The Argus 10 Jul 1913 p11*)

The Mayors of Malvern

The following Mayors of Malvern City Council (now Stonnington) lie buried at the Cheltenham cemeteries:

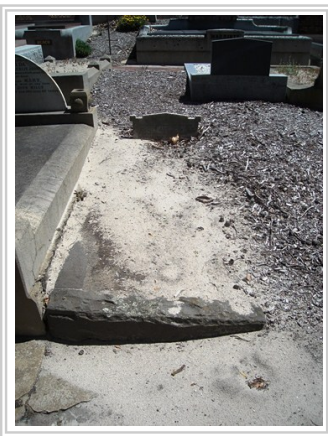
Frederick Henry Francis (pictured) (CofE "49" 33, Pioneer Cemetery)—Mayor, Malvern City 1920-21. Francis was also a Federal parliamentarian who represented the seat of Henty (1919-25)

John George Heywood (CofE "D" 141, Pioneer Cemetery)—Chairman, Gardiner Road Board 1870 (part); President, Gardiner Shire 1871 (part); and President, Malvern Shire 1881-83

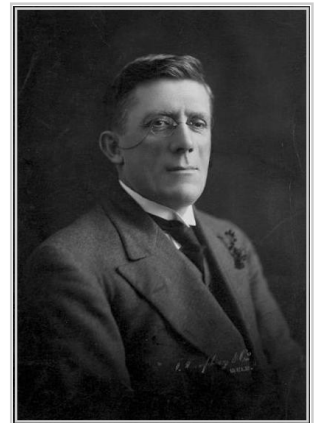
Louis William Holmes (CofC "93" 26, Pioneer Cemetery)—Mayor, Malvern City 1901-02 & 1919-20

Robert N Corney (CofE "108" 44, Memorial Park)—Mayor, Malvern City 1922-23

Douglas E Muir (Lawn "224A" 7V, Memorial Park)—Mayor, Malvern City 1965-66.



(above)
Grave of Robert Mills
(Cheltenham Pioneer Cemetery, Meth "30" 24)



(above)
Frederick Francis
(National Library of Australia—
nla.pic-an23397727)

George Beazley, Beaumaris Pioneer

By: Sue Beazley

George Beazley (CofE "E" 151) was christened on 7 May 1822 in the tiny village of Ickford on the border of Buckinghamshire and Oxfordshire. George was raised in Ickford and at a young age joined his father **Benjamin** (CofE "E" 152) working the fields that surrounded the tiny village. In July 1851 at the age of 29, George Beazley left Plymouth aboard the *Constance* looking for a new life and prosperity in Australia. He arrived at Hobson's Bay in the colony of Port Phillip on 27 October 1851 with his wife **Angelina née Ann Gray** (CofE "E" 151) and his three sons **James**, 6, (CofE "E" 185) **Henry**, 4, (CofE "E" 150) and Benjamin, two years old. A year later, George was joined by his parents Benjamin and Ann Beazley née Haines and George and Angelina's first daughter, Mary Ann, was born in Collingwood. Mary Ann was followed by three more daughters, Martha, Lucy and **Angelina Woff née Beazley** (Meth "E" 111) all born in Beaumaris.

An auction of crown land subdividing Beaumaris and Cheltenham in the parish of Moorabbin was held on 28 January 1852. It is not known exactly when George settled in Cheltenham, but it is likely that he purchased one of these subdivisions as the 1853 petition to establish a post office in Cheltenham records George as a market gardener living in Cheltenham. His earlier life as a village agricultural labourer was to stand him in good stead in the new area. The 1856 census records George as a yeoman of Red Cliff in the parish of Moorabbin. At that time Moorabbin encompassed the areas of Cheltenham, Black Rock, Moorabbin and Beaumaris.

The 1862 rate book shows George with a holding of 12 acres at Beaumaris and living in Spring Grove, the original name given to the area between Cheltenham and Beaumaris around Weatherall Road. From around 1868 to his death in 1894, George and his family are shown living in Charman Road, Cheltenham opposite Latrobe Street, but records suggest that the original holding was the land bounded by Charman Road, Weatherall Road, Church Street and probably Balcombe Road. *The Argus* newspaper of 20 July 1864 reports George's election to the school committee of Beaumaris No. 84 along with two other locals, **Henry Wells** (CofE "E" 227) and **Samuel Mundy** (Meth "E" 136). At the time the Beaumaris school was



(above)
James Edward Beazley (d 1926) and his wife Beatrice née Bellew (d 1964) (Cheltenham Pioneer Cemetery, CofE "104" 37)

located in Latrobe Street, Cheltenham.

George passed away 27 June 1894 at his home in Charman Road and was interred at the Cheltenham Pioneer Cemetery on 29 June in a double grave next to his father Benjamin who had died at Beaumaris in 1881. His mother Ann had died in 1862 and was buried at the old Beaumaris Cemetery at the corner of Balcombe Road and Bickford Court. Following George's death Angelina moved to the Church Street property of her youngest daughter Angelina and her husband **Robert Woff** (Meth "E" 111) where she lived until her death 19 January 1919 at the age of 97 years old. Angelina was buried with her husband.

There are many of George's descendants buried at Cheltenham cemetery, including his sons James and Henry and their families. James became a local butcher in Cheltenham and then Elsternwick, licensee of the Elsternwick Hotel and in 1880 stood against (Sir) Tommy Bent for the seat of Brighton in the Victorian Parliament. Needless to say he lost. Henry was also a well known local butcher and established a farm in Wells Road, Chelsea. This farm is now the very popular community park and playing fields known as Beazley Reserve.

The year 2011 commemorates 160 years since George and his family first arrived in Port Phillip, it also commemorates five generations of Beazleys who have lived and worked in Beaumaris/Cheltenham and surrounding areas. George's great, great grandson continues to live in Beaumaris and his children, who grew up in the area, mark the fifth generation.

Editor's Note: The headstone inscription of Benjamin Beazley includes his wife Ann which reads—"also his wife - Ann Beazley - died 7, Nov, 1863, [sic-1862] aged 75 years."

There are known to be a further five headstone inscriptions at the Pioneer Cemetery which commemorate a person who was buried at the Beaumaris Cemetery. These are: **Charlotte** (d 12 Sep 1857) and **William Walker** (d 9 Nov 1858)—CofC "A" 19; **Edward Ruse** (d 20 Dec 1857)—CofC "A" 20; **Ann Addicott** (d 16 Jan 1863)—CofE "E" 180; **John Woff** (d 13 Mar 1865)—Meth "E" 139; and **Alfred** (d 10 Oct 1855), **Elizabeth** (d 17 Feb 1858), **Walter** (d 16 Jan 1858) and **William Le Page** (d 3 Feb 1860)—CofC "A" 75. The monuments to Ann Addicott and the Le Page family were erected in recent times.

(Source: Family research by Sue Beazley, 2011)



(above)
Grave of the Beazley family (Cheltenham Pioneer Cemetery, CofE "E" 151-152)